

PART OF THE NW. 1/4, OF SECTION 33, T.6N., R.2W., S.L.B. & M.

583

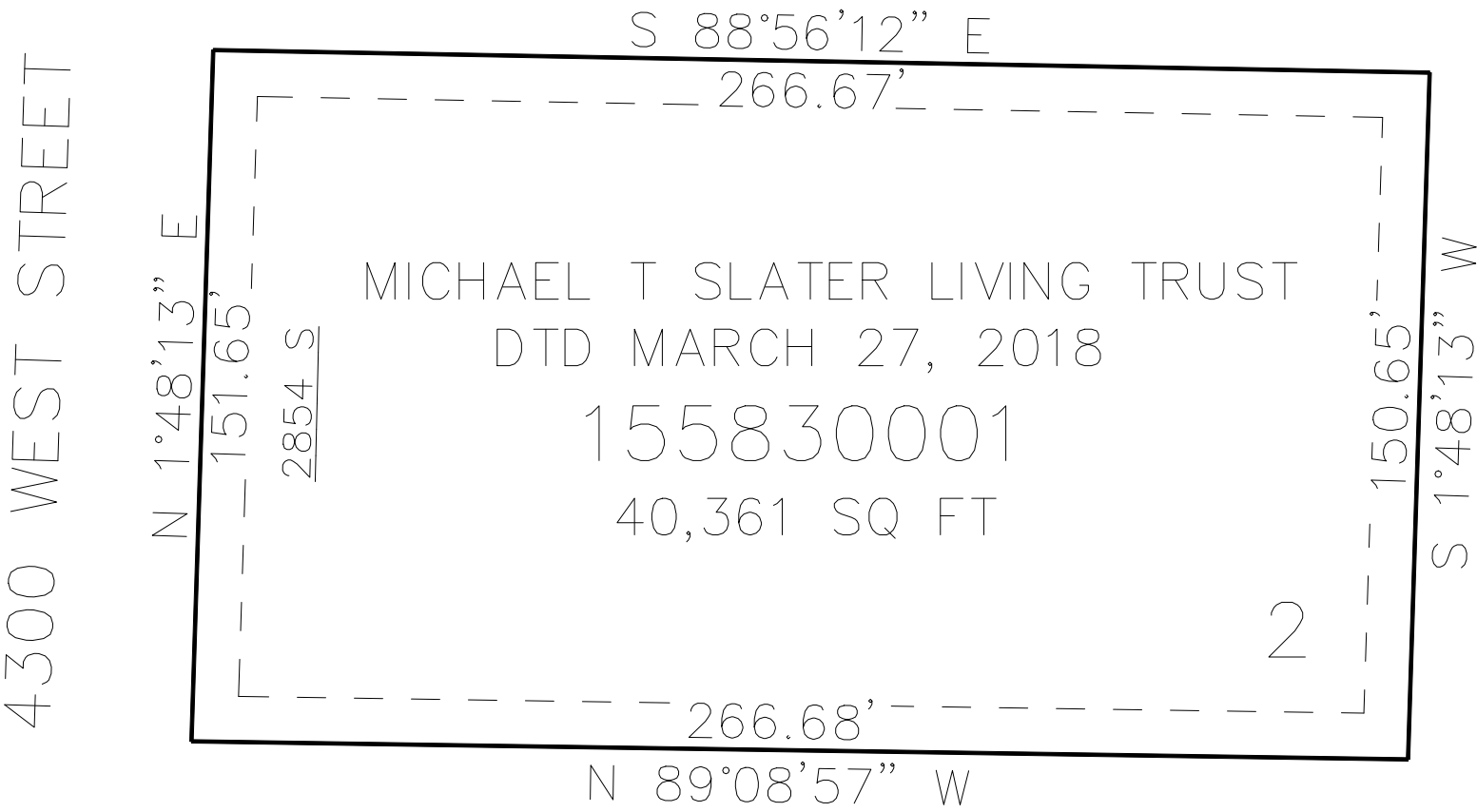
ELIAS ESTATES PHASE 2

IN WEBER COUNTY

TAXING UNIT: 516

SCALE 1" = 40'

SEE PAGE 90



SEE PAGE 90

SEE PAGE 89

10' UTILITY & DRAINAGE EASEMENTS EACH
SIDE OF PROPERTY LINES AS INDICATED
BY DASHED LINES EXCEPT AS OTHERWISE
SHOWN.

FOR COMPLETE ENG DATA SEE
ORIGINAL DEDICATION PLAT IN
BOOK 77, PAGE 75 OF RECORDS.